

Children's Wisconsin in your community

Pediatric hospitals

Children's Wisconsin is one of the nation's top pediatric facilities, ranked among the nation's best by *U.S. News & World Report*. Our hospitals, located in Milwaukee and Neenah, Wis., provide inpatient care, including transport of critically ill or injured children and intensive care services.

Specialty care

We offer outpatient specialty care in more than 70 medical specialties. This specialty care is available at our hospitals and at clinics throughout Wisconsin to provide easier access to care.

Specialty service collaborations

Our pediatric specialty providers offer services at other hospitals and clinics throughout Wisconsin through Children's Specialty Group, a joint venture of Children's Wisconsin and the Medical College of Wisconsin. These collaborations with other health care organizations allow us to extend our expertise to more patients closer to their homes.

Urgent care

Our urgent care sites are the Milwaukee area's only walk-in clinics just for kids. Urgent care is for illnesses or injuries that are not serious emergencies and happen after primary care clinics have closed. We also offer online urgent care video visits, which provide pediatric urgent care through the convenience of your phone or mobile device.

Primary care

We have more than 100 primary care pediatricians serving children in southeastern Wisconsin.

Behavioral health

Children's offers many options for families who need access to mental health providers. We have psychiatrists, psychologists, neuropsychologists, psychotherapists and nurse practitioners who provide mental health diagnosis and treatment for a variety of disorders. Our counselors work with children and families to address social and emotional difficulties and strengthen family ties.

School Health Nurse Program

Registered nurses provide care for kids at schools throughout Milwaukee. They also educate children and families about preventive care, help monitor chronic illnesses such as asthma, diabetes, seizures or sickle cell disease, and coordinate care with doctors, social workers and insurance companies.

School-Based Mental Health

Our child and family therapists work directly in schools to:

- Provide individual counseling and group therapy
- Consult with parents and teachers to support a child's success
- Work with school staff to foster a healthy environment for students

Child advocacy and social services

Children's has a long history of advocating for children. Staff members at centers throughout the state work together to provide child welfare services. Wisconsin families are supported in many ways, including:

- Creating stable and loving homes through foster care and adoption when children need a temporary or permanent home
- Offering parenting education and support through family resource centers and home visiting programs so parents can raise healthy, happy children
- Helping ensure the safety and well-being of children through intensive in-home and family case management work
- Protecting children from abuse and helping them heal through abuse assessment, referral to support services, and professional and community education

Children's Community Health Plan

Children's Community Health Plan is an HMO for BadgerCare Plus eligible families living in Wisconsin. Our health plan currently covers more than 134,100 children and adults in more than 35 Wisconsin counties.

Other services

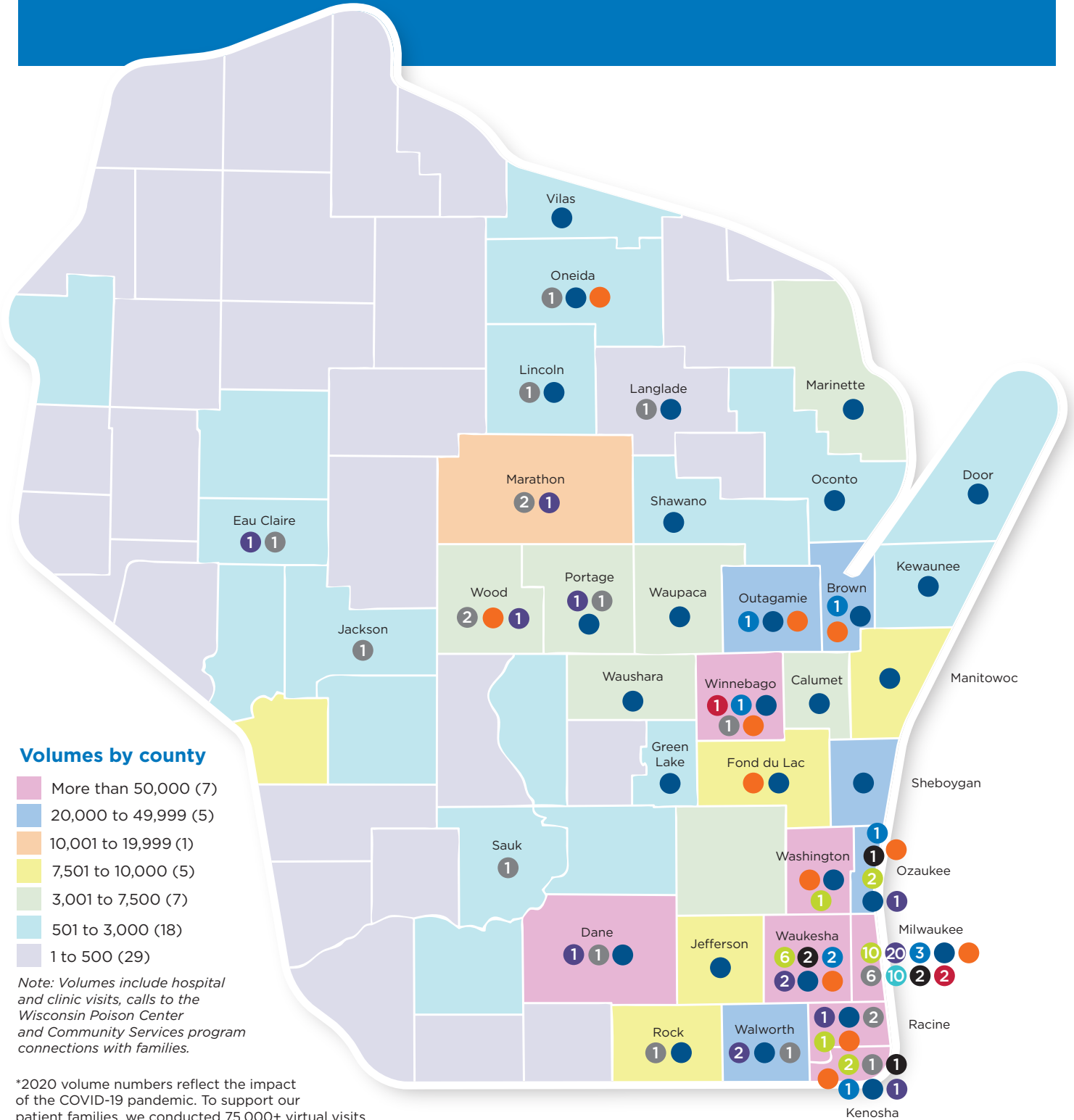
Research – Our research advances state-of-the-art pediatric health care through programs to find lifesaving cures for the diseases that affect children. We also search for treatments to enhance quality of life for children and families living with chronic health conditions.

Health education – We provide health education on topics critical to children and their families. Programs include multiple educational interactions with students, teaching them how to make healthy choices. Programs also are available to families to teach them how to prevent injuries.

Wisconsin Poison Center – The poison center provides 24-hour, toll-free poison information for all individuals in Wisconsin. The Poison Center has national certification from the American Association of Poison Control Centers, which is the nationwide organization that sets standards and collects exposure data for poison centers across the country.



Kids deserve the best.



Children's Wisconsin services

- Pediatric hospitals/surgery centers
- Urgent care
- School Health Nurse Program
- Specialty care
- Primary care
- Child advocacy and social service
- Specialty service collaborators
- Behavioral health
- Children's Community Health Plan