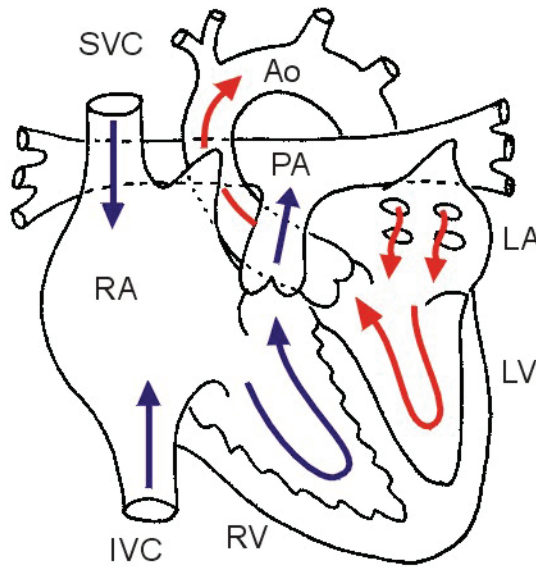
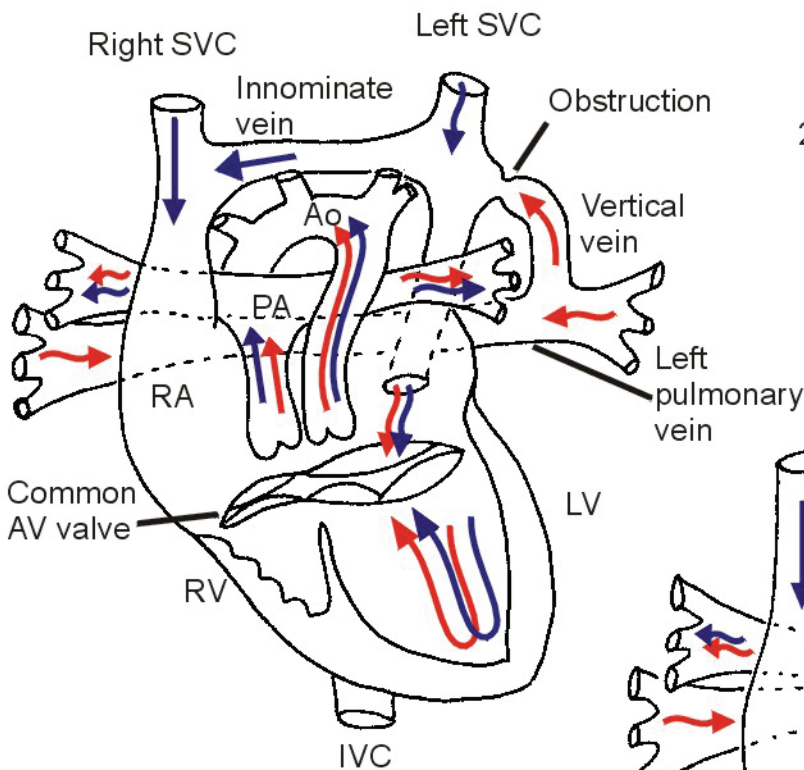


Heterotaxy Syndrome

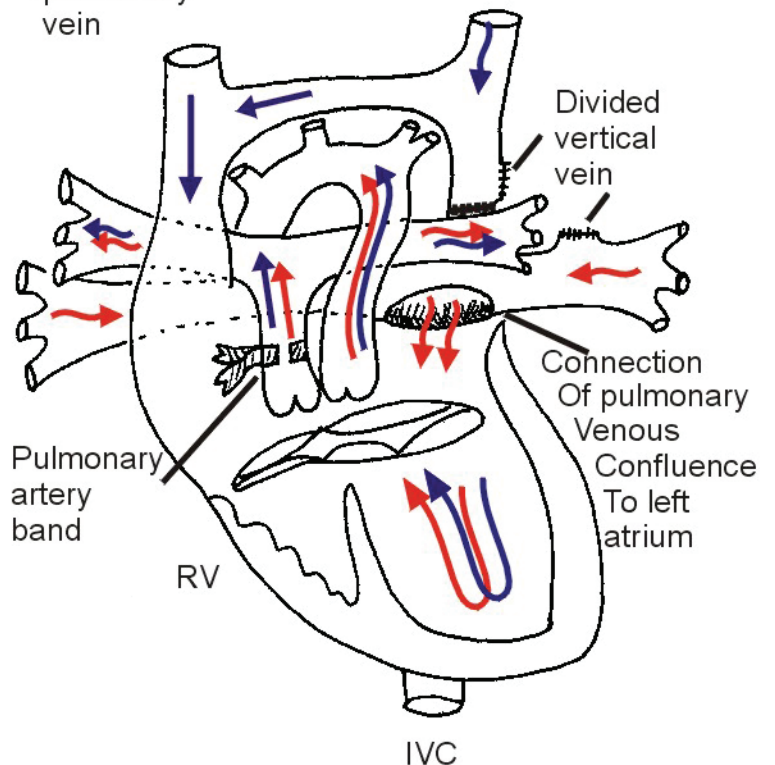
Normal Heart



1. Heterotaxy heart
(see description below figure)



2. First stage palliation:
Pulmonary artery band
Repair of total anomalous pulmonary venous connection with connection of pulmonary venous confluence to left atrium



Diagnosis

Heterotaxy syndrome with asplenia
Unbalanced atrioventricular canal
Total anomalous pulmonary venous
to left superior vena cava connection
(obstructed)
Right aortic arch