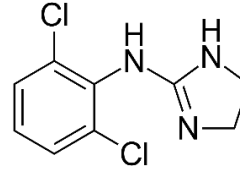


Clonidine

Trade name: Catapres, Kapvay

Category of medication: Alpha-agonist

Formulations: IR: tablet, solution, patch, ER: tablet



FDA-approved indications: ADHD (for children 6-17), management of tics, hypertension, cancer-related pain

Off-label use: aggression/agitation, anxiety, insomnia, PTSD, opioid/alcohol withdrawal

General dosing recommendations:

1. IR formulation:
 - a. <45kg=0.05mg qHS, increase by 0.05mg/day q3-7 days. Can utilize BID or TID dosing. Max dose=0.3mg/day
 - b. >45kg=0.1mg qHS, increase by 0.1mg/day q3-7 days. Can utilize BID or TID dosing. Max dose=0.4mg/day
2. ER formulation: 0.1mg qHS, increase by 0.1mg/day q7 days. Can utilize BID or once daily dosing. Max dose=0.4mg qHS.
3. Patch: switch to patch after achieving optimal PO Clonidine dose. Transdermal patch dosing is equivalent to PO dosing. Change patch q5-7 days.

Monitoring: blood pressure at each follow-up appointment, no lab monitoring required

Considerations: can cause rebound hypertension if stopped abruptly

To discontinue: Decrease dose by 1/3 to 1/2 q2-3 days

Significant interactions: CNS depressants, blood pressure medications

Common side effects: sedation, hypotension, bradycardia