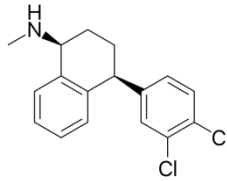


## Facts about Sertraline (Zoloft)



-Mechanism of Action: Sertraline has dopamine reuptake inhibition (DRI) and sigma 1 receptor binding in addition to serotonin reuptake inhibition. The DRI effects may improve energy, motivation and concentration. The sigma properties may improve anxiety and psychotic symptoms in psychotic depression (Stahl, 2013).

-Despite only being FDA approved for treatment of OCD in Children ages 6-17, it is used commonly to treat depression, anxiety, and PTSD in children.

-Typical dose ranges from 12.5-200 mg daily with the higher doses often needed when treating anxiety and OCD.

-Available in 25 mg, 50 mg and 100 mg tablets as well as 20 mg/ml solution.

-Starting dose typically 12.5-25 mg and may increase by 25-50 mg increments.

-More common side effects similar to when used in adults: nausea, diarrhea, headache, either sleepiness or insomnia, increased anxiety, decreased libido or ejaculation delay.

-Other than sexual side effects, symptoms often improve or resolve with time on medication.

-Sexual side effects resolve when medication is discontinued.

-As with all antidepressants, Sertraline has an FDA Black Box Warning:

See: [www.parentsmedguide.org](http://www.parentsmedguide.org)

