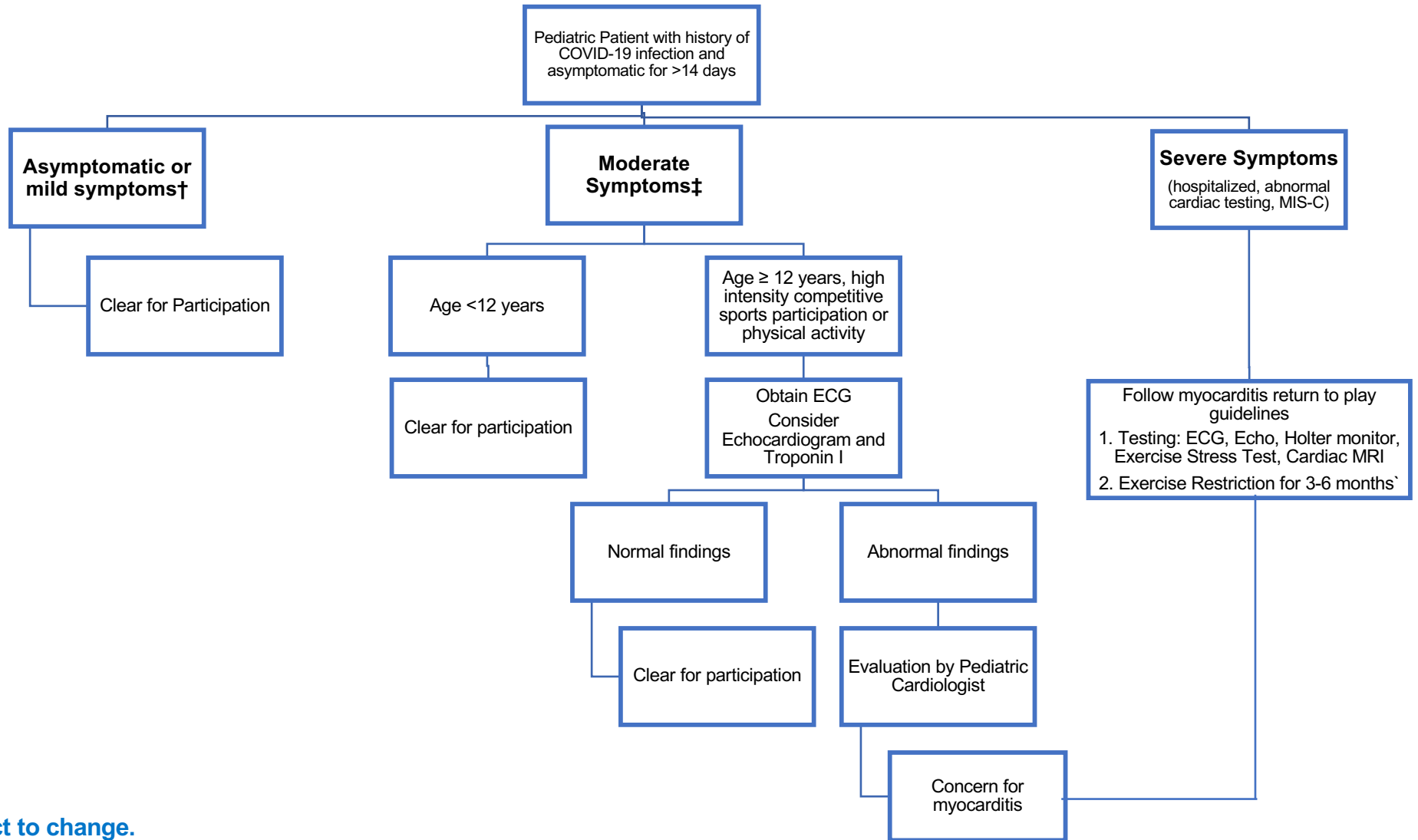




Children's Wisconsin

Return to Play After COVID 19 Infection in Pediatric Patients 11/18/2020*

Based on guidelines published by [ACC](#) and [JAMA](#)



*Subject to change.

Visit childrenswi.org/COVIDsports for the latest recommendations.

†Mild symptoms include anosmia, ageusia, headache, mild fatigue, mild upper respiratory tract illness, and mild gastrointestinal illness

‡Moderate symptoms include persistent fever >3 days, chills, myalgias, lethargy, dyspnea, and chest tightness without hospitalization
Depending on the patient and situation it may be reasonable to pursue work up at an earlier age

All care guidelines can be found at childrenswi.org/careguidelines.

If you're looking for more information, please reach out to one of our physician liaisons. For contact information, visit childrenswi.org/liaisons.