

# Children's Hospital of Wisconsin

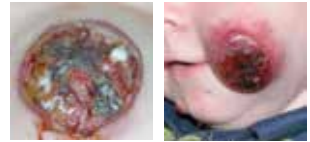
## Infantile hemangioma guidelines

Infantile hemangiomas occur in an estimated 5 to 10 percent of infants. Most of these benign tumors do not require treatment. However, 30 percent of infantile hemangiomas will require intervention.

### Complications include:

- Ulceration, which can lead to pain, difficulty eating and sleeping, infection and scarring.
- Functional impairment in the case of periorbital or airway hemangioma.
- High risk of disfigurement when the hemangioma is on the forehead, nose or lip.
- Cutaneous hemangioma as a sign of systemic disease.
  - Multifocal cutaneous hemangioma, defined as more than five, can be associated with liver and/or gastrointestinal hemangiomas.
  - Large, segmental hemangioma (more than 5 cm) on the head and neck can be associated with a particular set of congenital anomalies, known collectively as PHACE syndrome. PHACE is an acronym for Posterior fossa anomalies, infantile Hemangiomas, Arterial, Cardiac and Eye anomalies.
  - Hemangioma over the lumbosacral region is associated with spinal dysraphism.

(over)



Ulceration



Functional impairment

Large, segmental hemangioma



High risk of disfigurement



Multifocal cutaneous hemangioma



Hemangioma over the lumbosacral region

**Refer to a birthmark specialist, usually a pediatric dermatologist, when:**

- An atypical growth pattern or the hemangioma is present at birth
- The hemangioma develops an ulceration or becomes painful
- It is on the face, especially near the eye, nose or lip
- It is large, growing rapidly or in a region that could interfere with function
- There are more than five cutaneous hemangiomas
- It is on the midline of the lumbosacral spine
- It is located on the head or neck and measures more than 5 cm

**Clinic information**

Nurse coordinator – (414) 266-3727

[chw.org/birthmarks](http://chw.org/birthmarks)

**Medical care guidelines**

Tools for primary care providers

[chw.org/medicalguidelines](http://chw.org/medicalguidelines)

**Physician consultation and referral**

Refer a patient • Discuss a case • Arrange a transport

[chw.org/refer](http://chw.org/refer)

(414) 266-2460 or toll-free (800) 266-0366

**Appointments**

Outpatient specialty appointments

[chw.org/appointment](http://chw.org/appointment)

(414) 607-5280 or toll-free (877) 607-5280