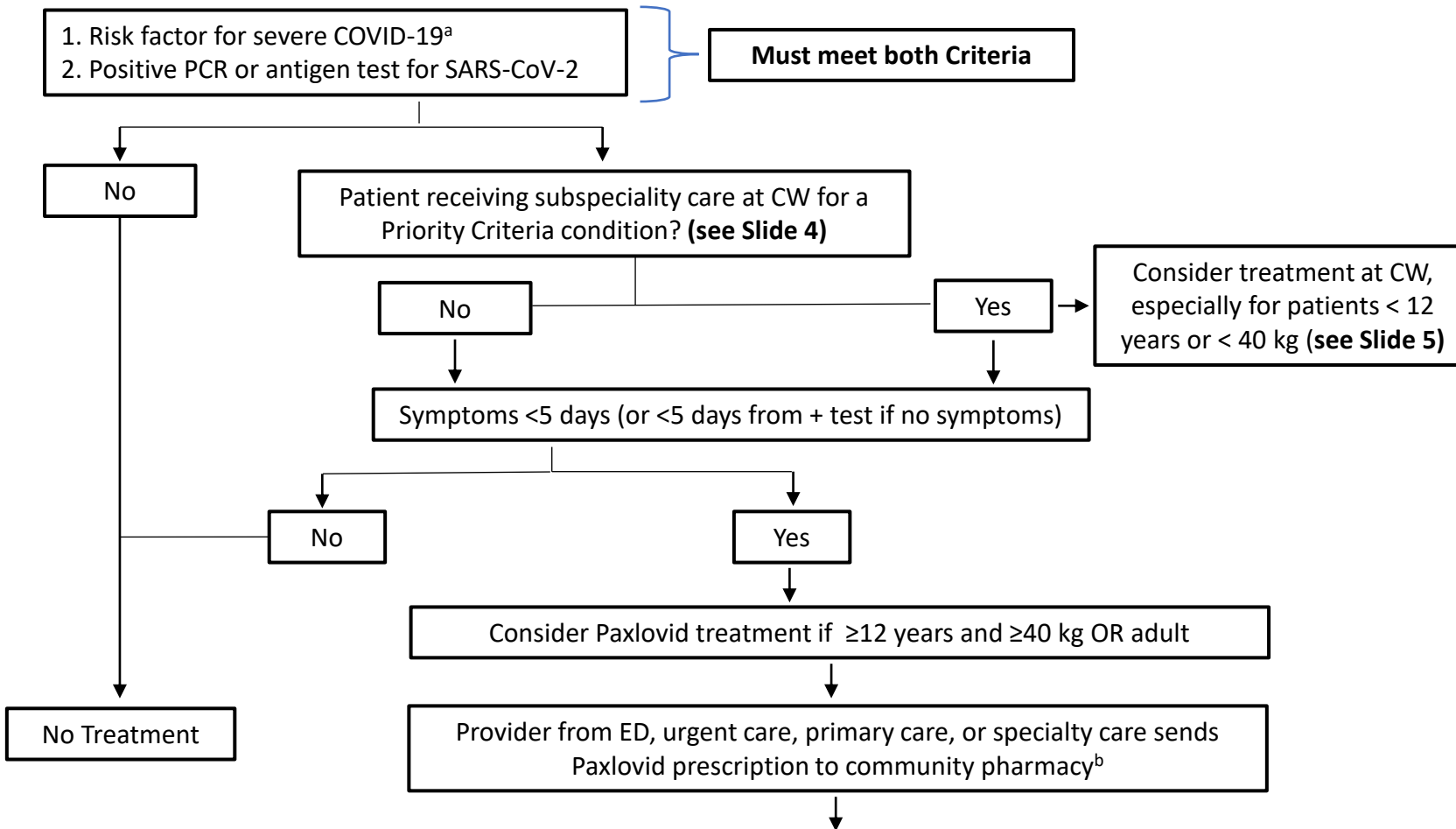


Treatment of mild-moderate COVID-19 outside CW (Paxlovid from community pharmacies)



a. Risk factors for severe COVID-19 from CDC (more inclusive than CW priority list)

<https://www.cdc.gov/coronavirus/2019-ncov/hcp/clinical-care/underlyingconditions.html>

b. Pharmacies that received distributions of Paxlovid:

<https://www.dhs.wisconsin.gov/covid-19/treatments.htm> or <https://covid-19-test-to-treat-locator-dhhs.hub.arcgis.com/>

Skywalk does not have a supply of Paxlovid as of 5/19/22. Epic and other EMRs will not alert providers if a pharmacy does not carry Paxlovid.

c. Resources to assess for drug-drug interactions with Paxlovid in addition to Lexicomp:

<https://www.covid19-druginteractions.org/checker>

https://www.med.umich.edu/asp/pdf/outpatient_guidelines/Paxlovid-DDI.pdf

<https://www.covid19treatmentguidelines.nih.gov/therapies/antiviral-therapy/ritonavir-boosted-nirmatrelvir--paxlovid/>

d. CW providers can be paged through the CW operator at 414-266-2000 or physician access center.

e. The Outpatient COVID-19 Treatment Liaison is available M-F/8-4 through Voalte or the online intake form (see COVID treatment page in intranet or <https://childrenswi.org/medical-professionals/tools-and-resources/covid-19-resources>). The on-call ID attending can be paged for afterhours urgent questions.

